



義覺企業有限公司

Yi-jiue

Co., Ltd.

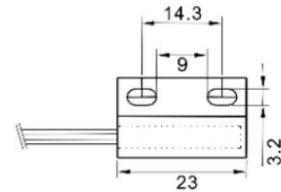
【PROXIMITY SWITCH】
【近接開關】

PS-23

Sensor Body Material	ABS
Filling	Epoxy {化}環氧(化物)的
Max. Contact Rating	10 W
Max. Switching Voltage	100 VDC
Max. Switching Current	0.5 A
Min. Breakdown Voltage	200 VDC
Max. Carry Current	1.0 A
Max. Initial Contact Resistance	200 mΩ
Do not include the wire	
Min. Insulation Resistance	10 ⁸ Ω
Max. Release Time	0.1 ms
Max. Operate Time	1.0 ms



PS-23

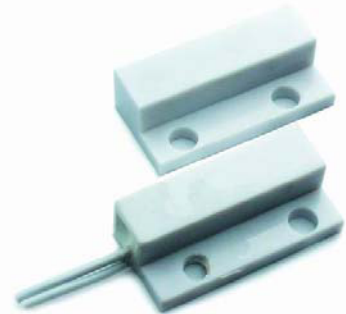


單位:mm

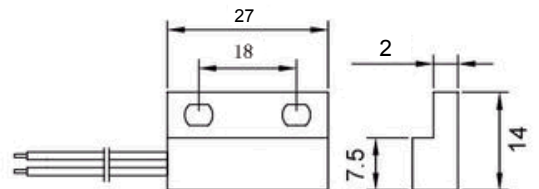
【PROXIMITY SWITCH】
【近接開關】

PS-27

Sensor Body Material	ABS
Filling	Epoxy {化}環氧(化物)的
Max. Contact Rating	10 W
Max. Switching Voltage	100 VDC
Max. Switching Current	0.5 A
Min. Breakdown Voltage	200 VDC
Max. Carry Current	1.0 A
Max. Initial Contact Resistance	200 mΩ
Do not include the wire	
Min. Insulation Resistance	10 ⁸ Ω
Max. Release Time	0.1 ms
Max. Operate Time	1.0 ms



PS-27



單位:mm

電話：(02)2786-2589 傳真：(02)2786-4011 手機：0933-915-996

115-59 台北市南港區成福路178巷22號1樓



義覺企業有限公司

Yi-jiue

Co., Ltd.

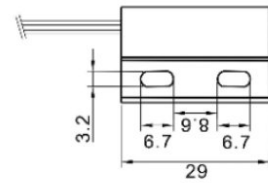
【PROXIMITY SWITCH】
近接開關

PS-29

Sensor Body Material	ABS
Filling	Epoxy {化}環氧(化物)的
Max. Contact Rating	10 W
Max. Switching Voltage	100 VDC
Max. Switching Current	0.5 A
Min. Breakdown Voltage	200 VDC
Max. Carry Current	1.0 A
Max. Initial Contact Resistance	200 mΩ
Do not include the wire	
Min. Insulation Resistance	10 ⁸ Ω
Max. Release Time	0.1 ms
Max. Operate Time	1.0 ms



PS-29



單位:mm

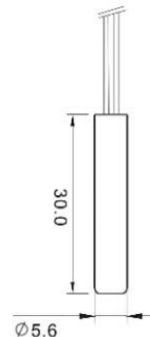
【PROXIMITY SWITCH】
近接開關

PS-30

Sensor Body Material	ABS
Filling	Epoxy {化}環氧(化物)的
Max. Contact Rating	10 W
Max. Switching Voltage	100 VDC
Max. Switching Current	0.5 A
Min. Breakdown Voltage	200 VDC
Max. Carry Current	1.0 A
Max. Initial Contact Resistance	200 mΩ
Do not include the wire	
Min. Insulation Resistance	10 ⁸ Ω
Max. Release Time	0.1 ms
Max. Operate Time	1.0 ms



PS-30



單位:mm

電話：(02)2786-2589 傳真：(02)2786-4011 手機：0933-915-996

115-59 台北市南港區成福路178巷22號1樓



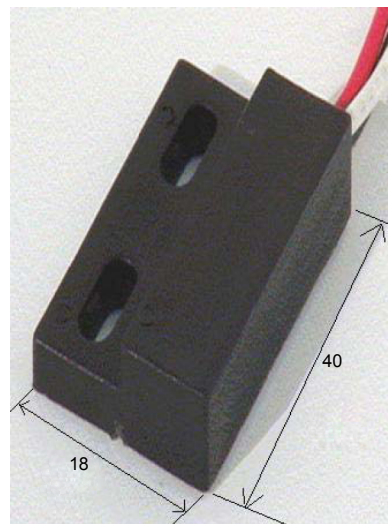
義覺企業有限公司
Yi-jiue Co., Ltd.

【PROXIMITY SWITCH】
【近接開關】

PS-40

PS-40

Sensor Body Material	ABS
Filling	Epoxy {化}環氧(化物)的
Max. Contact Rating	10 W
Max. Switching Voltage	100 VDC
Max. Switching Current	0.5 A
Min. Breakdown Voltage	200 VDC
Max. Carry Current	1.0 A
Max. Initial Contact Resistance	200 mΩ
Do not include the wire	
Min. Insulation Resistance	10 ⁸ Ω
Max. Release Time	0.1 ms
Max. Operate Time	1.0 ms



單位:mm

電話：(02)2786-2589 傳真：(02)2786-4011 手機：0933-915-996

115-59 台北市南港區成福路178巷22號1樓